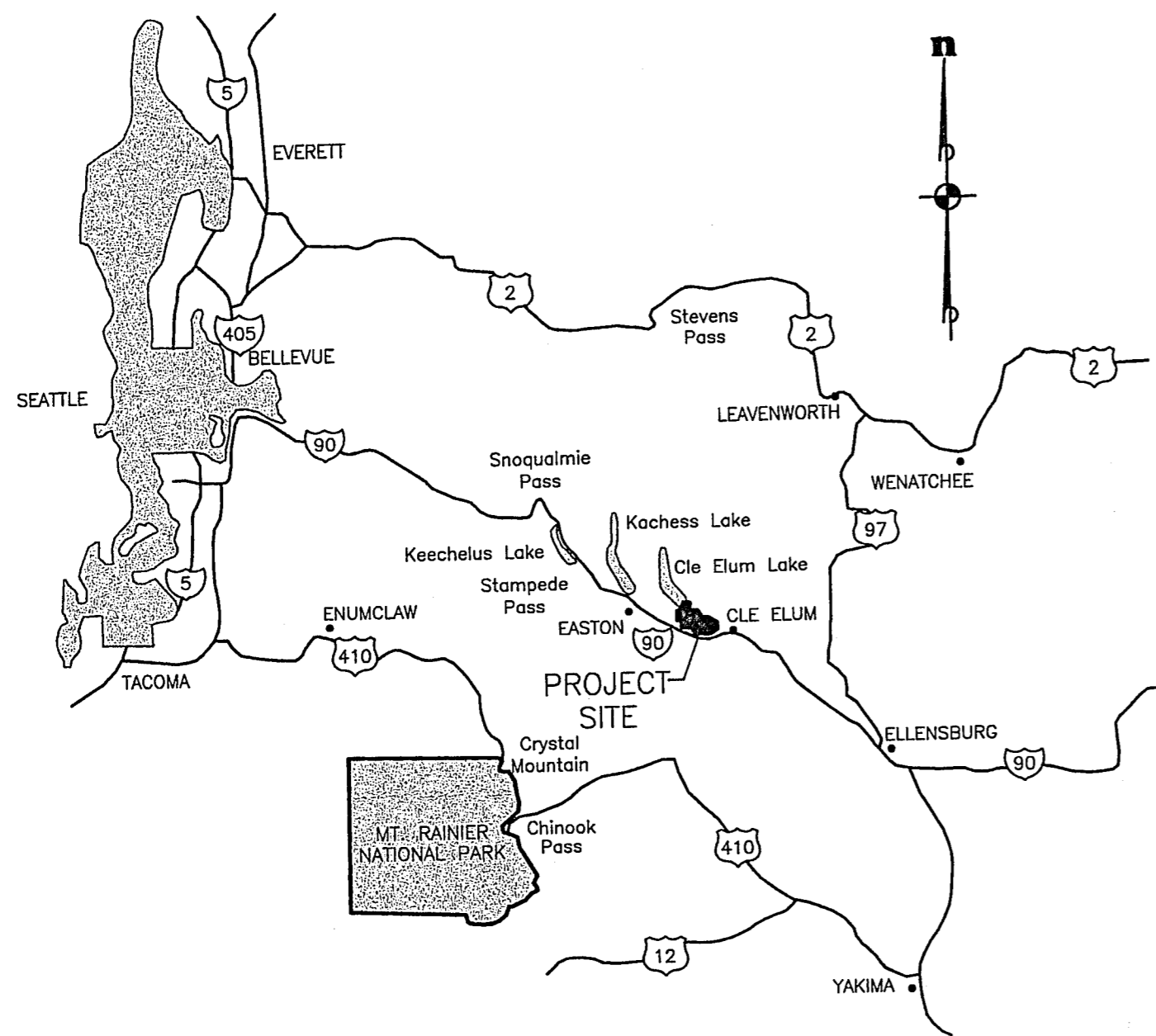
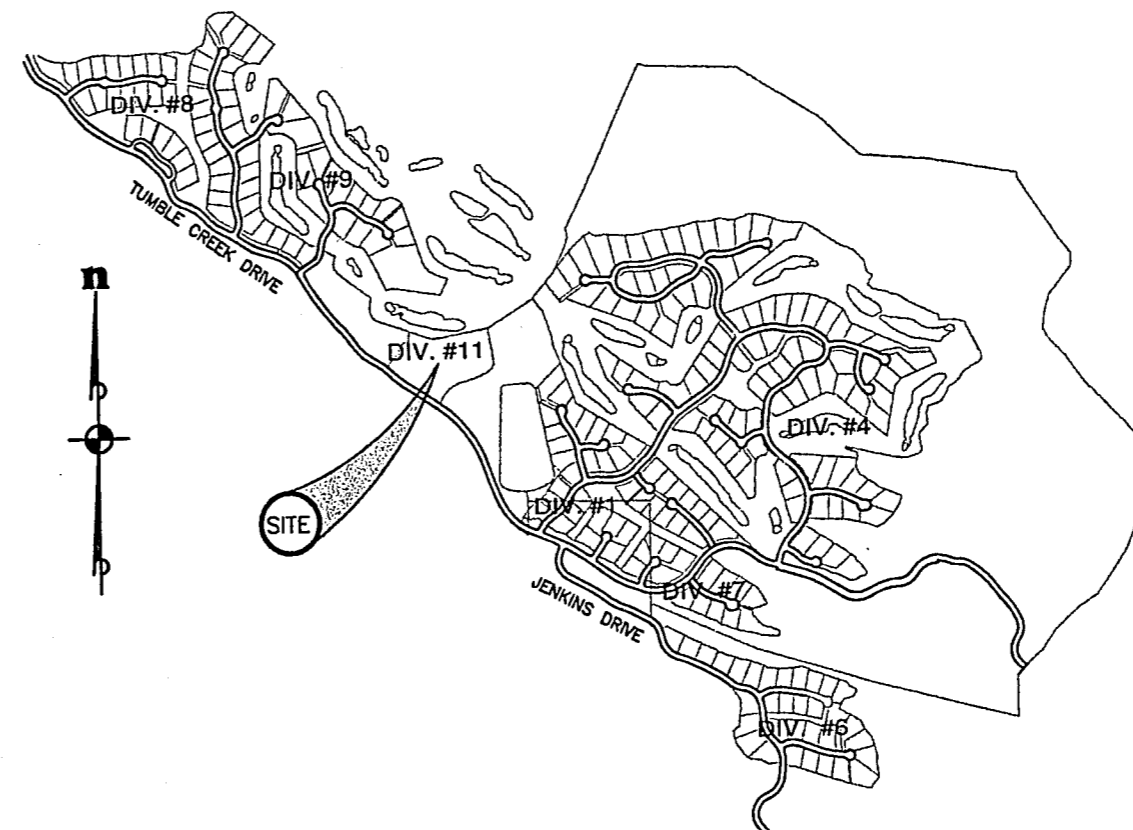


A PORTION OF SECTIONS 14 AND 23, TWP. 20 N., RGE., 14 E., W.M.,
KITTITAS COUNTY, WASHINGTON



VICINITY MAP
NOT TO SCALE



LOCATION MAP
NOT TO SCALE

BASIS OF HORIZONTAL & VERTICAL DATUMS

BASIS OF HORIZONTAL DATUM:
 WASHINGTON STATE PLANE COORDINATE SYSTEM, SOUTH ZONE, NAD83/91.
 PROJECT IS REFERENCED VIA GPS TO NGS CONTROL POINTS "EASTON" (PID SX0662) AND "U358" (PID SX0459). THE DISTANCES SHOWN HEREIN ARE GROUND DISTANCES. TO CONVERT TO GRID DISTANCES, MULTIPLY BY A COMBINED AVERAGE SCALE FACTOR OF 0.999870387.

BASIS OF VERTICAL DATUM:
 NGVD '29
 BENCH MARK DISK L 525 1982, LOGO MARK - NGS NGVD 29 ELEVATION = 2026.05 LOCATION: SET IN TOP NORTH END OF WEST CURB OF THE INTERSTATE 90 HIGHWAY OVERPASS ALONG STATE HIGHWAY 903.

OWNER

SUNCADIA LLC, A DELAWARE LIMITED LIABILITY COMPANY
 109 S. FIRST STREET
 P.O. BOX 887
 ROSLYN, WASHINGTON 98941-0887
 TELEPHONE (509) 649-3000
 FACSIMILE (509) 649-3059

GENERAL NOTES

VACATION HOMESITES RANGING IN SIZE FROM 0.17 ACRES TO 0.22 ACRES.
 TOTAL ACREAGE PHASE 3, DIVISION 11 = 23.80 ACRES
 TOTAL LOT ACREAGE = 4.04 ACRES
 TOTAL NUMBER OF LOTS = 21
 TOTAL NUMBER OF TRACTS = 16

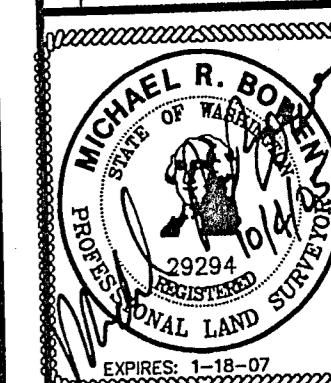
WATER & SEWER NOTES

WATER AND SEWER NOTES WILL BE PROVIDED BY SUNCADIA, LLC.

LEGAL DESCRIPTION

TRACT Z-1 OF THE PLAT OF SUNCADIA - PHASE 3 DIVISIONS 1 TO 5 (TUMBLE CREEK) AS RECORDED UNDER AUDITOR'S FILE NO. 200410080054, RECORDS OF KITTITAS COUNTY, WASHINGTON.

REVISIONS		
NO.	DESCRIPTION/DATE	BY



ESM CONSULTING ENGINEERS, L.L.C.
 39915 1st Way South
 Federal Way, WA 98003
 (206) 838-8113
 (206) 415-0144
 (206) 614-1905
 www.esmcivil.com
 Civil Engineering
 Public Works
 Land Surveying
 Project Management
 Land Planning
 Landscape Architecture

SUNCADIA, L.L.C.
CABINS AT TUMBLE CREEK - DIV. 11
PRELIMINARY PLAN
 KITTITAS COUNTY WASHINGTON

JOB NO.:	998-310-005
DWG. NAME:	PP-02
DRAWN BY:	R.J.W.
CHECKED BY:	
DATE:	9-28-05
PRINT DATE:	OCT 04 2005

Plotted: 10/4/2005 10:34 AM File: \\esmf\engr\ESM-JOB\998\310\005\plots\PP-01.dwg